

Take The A Train

Billy Strayhorn

C (Ionian)

D7(#11) (Whole Tone)



Dm7 (Dorian)

G7 (Mixolydian)

1. 3 C

Dm7

G7



2. C

C7 (Mixolydian)



FMaj7 (lydian)



D7 (lydian^b7)

Dm7

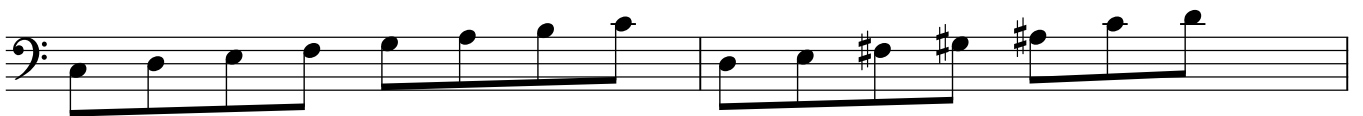
G7



D.C.

C Ionian

D Whole tone



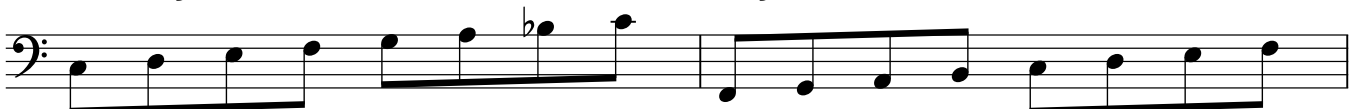
D Dorian

G Mixolydian



C Mixolydian

F lydian



D Lydian^b7

